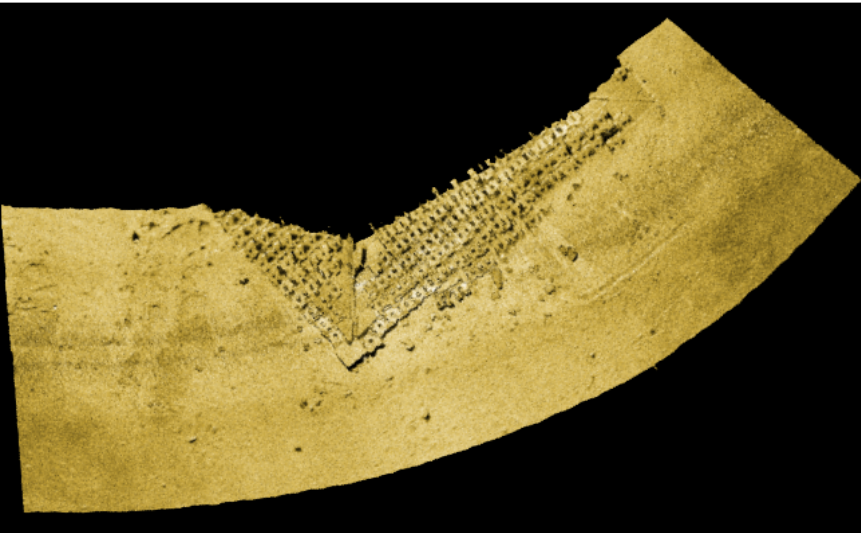


Sidescan Sonar Data Processing Software

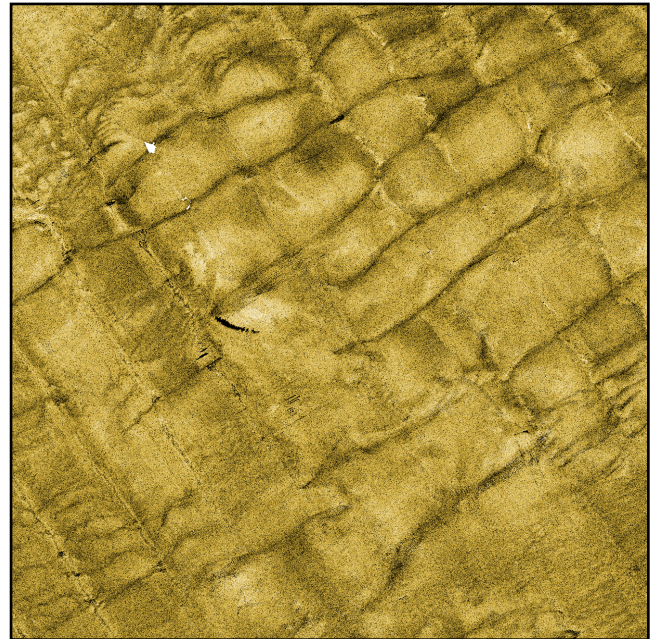


Lampyr i dEye6

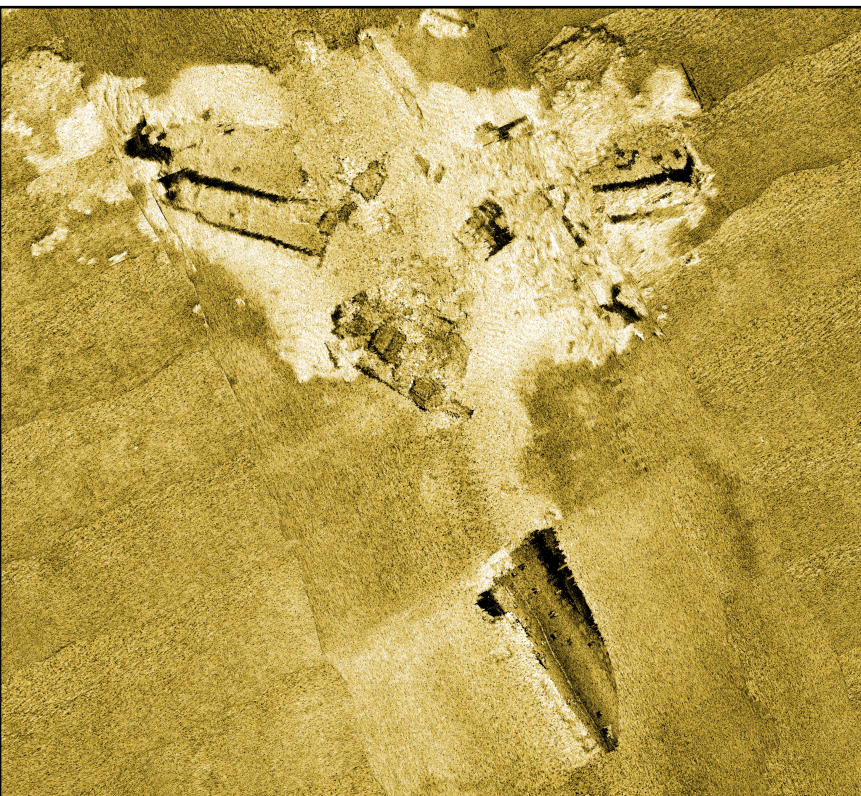
This software is making a mosaic image from acoustic information acquired by the side-scan sonar.



Structure



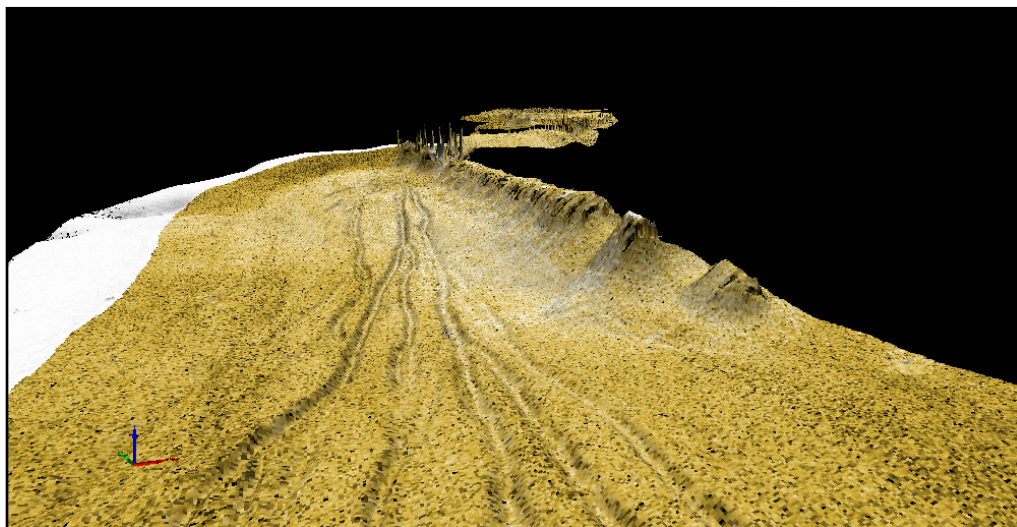
Sand Wave



Sunken Ship

- ◆ Supports various side scan data formats
- ◆ Visible track editor
- ◆ Various correction functions for physical data
- ◆ Handy tools to make mosaic images
- ◆ Displays and outputs high-resolution SSS (Side Scan Sonar) images

Lampyr i dEye6



3D mosaic image overlapped on the seafloor topography data by Visual3DX-6.*3

Optimization of graphical user interface

The optimized user interfaces such as a ribbon bar and a file view improve operational efficiency.

Import Format

XTF, XSE, all, mb41, asd, acf, hsx, JSF, S7K, 81s, 872, sdf.*1

Reading of external files

It reads the position information, motion information, and sensor water depth information from an external file, and corrected.

Information sharing

- Project files sharing with MarineDiscovery7.*2
- SSS images are easy to import into Visual3DX-6.*3 and other GIS software

Track Correction

- Display of track information (ship and tow fish)
- Manual or Auto editing of track (linear interpolation, spline interpolation)

Quality Control

- Browsing of data for each ping (e.g. date and time, location, 3-axis information, altitude, water depth, gain, pixel size, etc.)
- Graph displays of sensor information
- Various correction for each file (e.g. level, radiometric, magnetic deviation, bathymetric distortion, etc.)
- Batch Calculation of under water depth for each ping from image

Display Settings

- Three kinds of map projection (Mercator, TM and UTM) corresponding to the rotating coordinate by any origin
- Scale Settings (1/1000,1/2500,1/5000,1/10000,1/25000,1/50000,1/100000,1/200000,1/500000,1/1000000)
- Display in high resolution commensurate with enormous side scan data (150,180,300,600,1200dip, up to a maximum resolution of the input data)
- Selectable Color display (the mosaic image color can be displayed)

SSS Image View

- Geometric correction by using motion or track data
- Method of display image is selectable (e.g. raw, interpolation, averaging)
- Easy to generate mosaic images (image display order is selectable e.g. port, starboard, and time axis respectively)
- Import of contour images (Overlapping of contour images created by MarineDiscovery on mosaic images is available)
- Display mosaic images with color

New Distance on measure mosaic images

Export File

Bitmap, GeoTiff, PostScript

Operating environment

| | | |
|--------|------------------|---|
| PC | OS | Windows7 SP1, or later |
| | CPU | Intel Core i7 2600K, or more |
| | Memory | 8 GB, or more |
| | Hard Disk | 50 GB, or more (500 GB, or more recommended) |
| | Graphics board | GeForce GT610 or Radeon HD6450, or more |
| | Peripherals | CD-ROM, Keyboard, mouse |
| Screen | Resolution | 1280×1024, or higher |
| | number of colors | True Color 32 bits, or more |

*1.Please inquire about other formats and models.

*2.MarineDiscovery7 is our product, multibeam data processing software.

*3.Visual3DX-6 is our product, 3D visualization software.

