

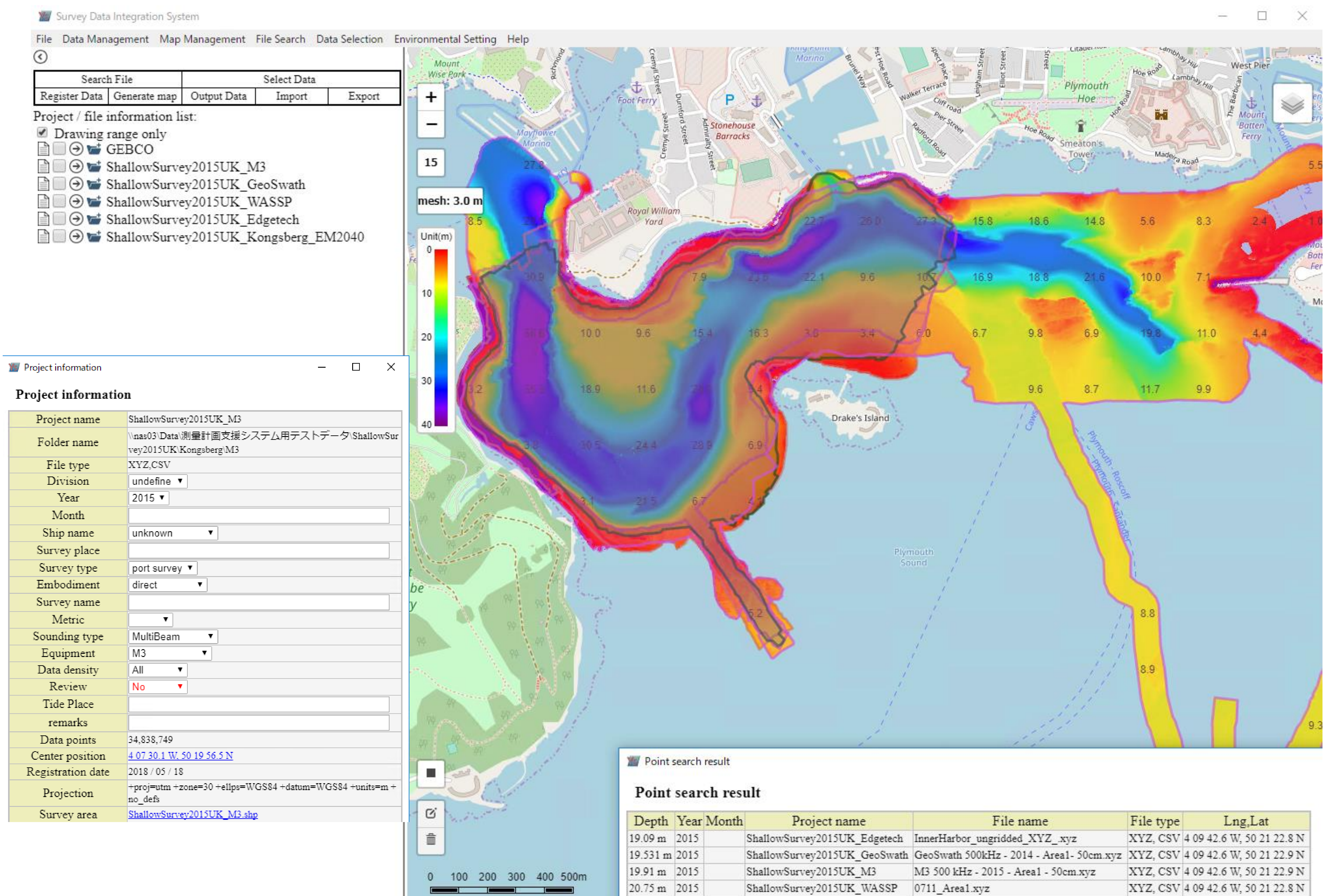


# Survey Data Integration Software OH-SDIS

This Software provide you management, display, search, and select of multiple survey data from Multibeam Sonar, Lidar, or Drone. You can display registered information of registered data and display multiple registered data in a superimposed manner. By clicking a certain point, you can search and compare multiple data existing at that Point Search.

Input: Point Cloud Data (text, xyz or las)  
GeoTIFF, Shapefile, S-57 ENC

Output: Selected or Merged Point Cloud Data (text, xyz or las)  
GeoTIFF, KMZ



Multiple Layers From Several Multibeam Sonars at Shallow Survey 2015 UK



## Main Features of Survey Data Integration System

- Register / Display Survey Data
- Register / Display Survey Drawing (Shapefile, GeoTIFF)
- Register / Display ENC Data (S-57)
- Register / Display GSI Japan Data
- Search Registered Files
- Select and Extract Registered Data
  - Attribute, Rectangle, Mesh, Sounding Selection
- Output of Registered Data (Selected, or Integrated)
- Display Multiple Layer of Survey Data, Survey Drawing, ENC, Geographical map
- Display Soundings, Survey Area, Contour, Shadow of Survey Data
- Output Map Image (GeoTIFF, KMZ)

## Environment

Windows 10 64bit

PostGIS 10



Ocean High Technology Institute, Inc.

2-29-12, Honcho, Nakano-ku, Tokyo 164-0012, Japan

TEL : +81-3-5354-5321 FAX : +81-3-5354-5322

URL : <https://www.ohti.co.jp/>

E-mail : [ser\\_vice\\_1@ohti.co.jp](mailto:ser_vice_1@ohti.co.jp)